

**SENSORS & SOFTWARE®**  
from RADIODETECTION

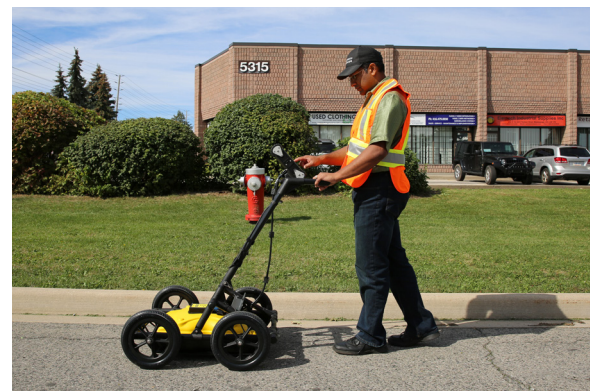
The simple, efficient way to **Locate & Mark™** utilities in the field.



LMX® GPR systems complement traditional pipe and cable locators and allow you to Locate & Mark:

- Metal utilities, including pipes and cables
- Non-metallic pipes, including PVC and asbestos cement
- Concrete storm and sewer systems
- Utilities where installed tracer wiring has failed
- Underground storage tanks and drainage tiles
- Septic system components
- Non-utility structures such as vaults, foundation walls and concrete pads

LMX Ground Penetrating Radar (GPR) systems are designed & optimized for utility locating, making the LMX® a natural addition to your locating workflow.



# LMX100™



## High Visibility Touch Screen Display Unit

- Free lifetime system software updates
- User selectable languages
- US Standard and Metric units



## On-site Reports

- Produce instant on-site reports from your display unit



## USB

USB for easy data transfer



## Integrated GPS

- Integrated GPS receiver for geo-referencing data



## Wi-Fi

Built-in Wi-Fi capability



## GPR Sensor

- Patented ultra-wideband (UWB) 250 MHz GPR antenna
- DynaT™ for Dynamic Target enhancement
- Offers perfect balance of depth penetration (up to 8 m/26 ft) & high resolution



## Lightweight Fiberglass Cart Frame

- No metal parts that would interfere with GPR signals
- Rugged, maneuverable, all-terrain cart

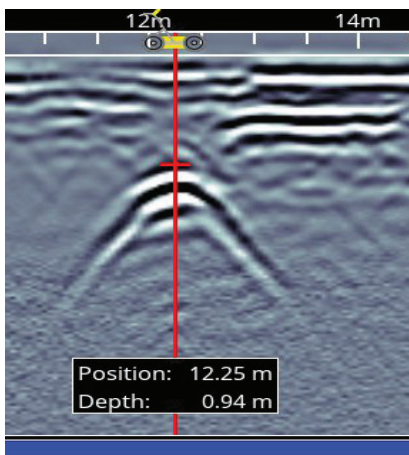


## Lead Acid Gel Cell Battery

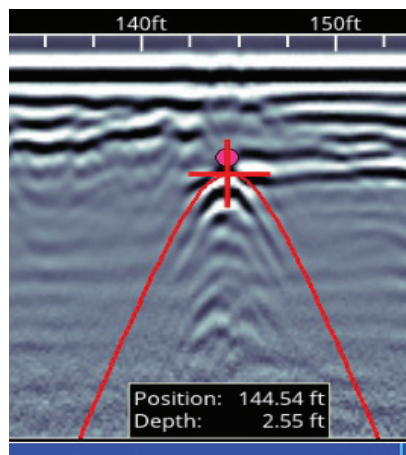
- Long lasting
- Swappable
- Locally available



## Pinpoint Depth & Location



## Easy Depth Calibration



Use hyperbola-fitting to ensure accurate depth measurements and backup over the target to display its location and depth.

## Dynamic Stacking (DynaQ)



Better data quality with DynaQ. The LMX automatically adjusts stacking (averaging) based on your survey speed.

- White = No data (too fast!)
- Yellow = Moderate quality
- Light blue = Better quality
- Dark blue = Highest quality